

A variety of insulation and cladding materials were used throughout the Olympic Village site. These include:



ROCK + SLAG MINERAL WOOL INSULATION (ROXUL)

- Manufactured in BC
- Consists of basalt rock and recycled Steel slag, with a minimum 40% recycled content



GREEN ROOF

- A growing medium, planted over a waterproofing membrane and structural support.



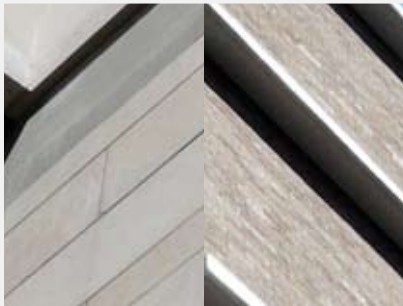
FRITTED GLASS

- Glass with enamel image fired onto surface
- Allows durable colour options



ALUCOBOND, REYNOBOND

- Metal composite sheet materials with durable finishes
- Can be shaped to suit varied architectural applications
- Low maintenance



MASONRY

- Brick, limestone



SWISSPEARL

- Fibre reinforced cement panel available in wide variety of colours
- Durable, low-maintenance



ZINC

- Known for durability, longevity and low maintenance

“What was the challenge? It was a huge project with strict budget and schedule constraints, but the world was told that these buildings would be ‘state of the art’ – so we all accepted the challenge to get them to that level.”

Doug Dalzell